

# Northland Reliability Project

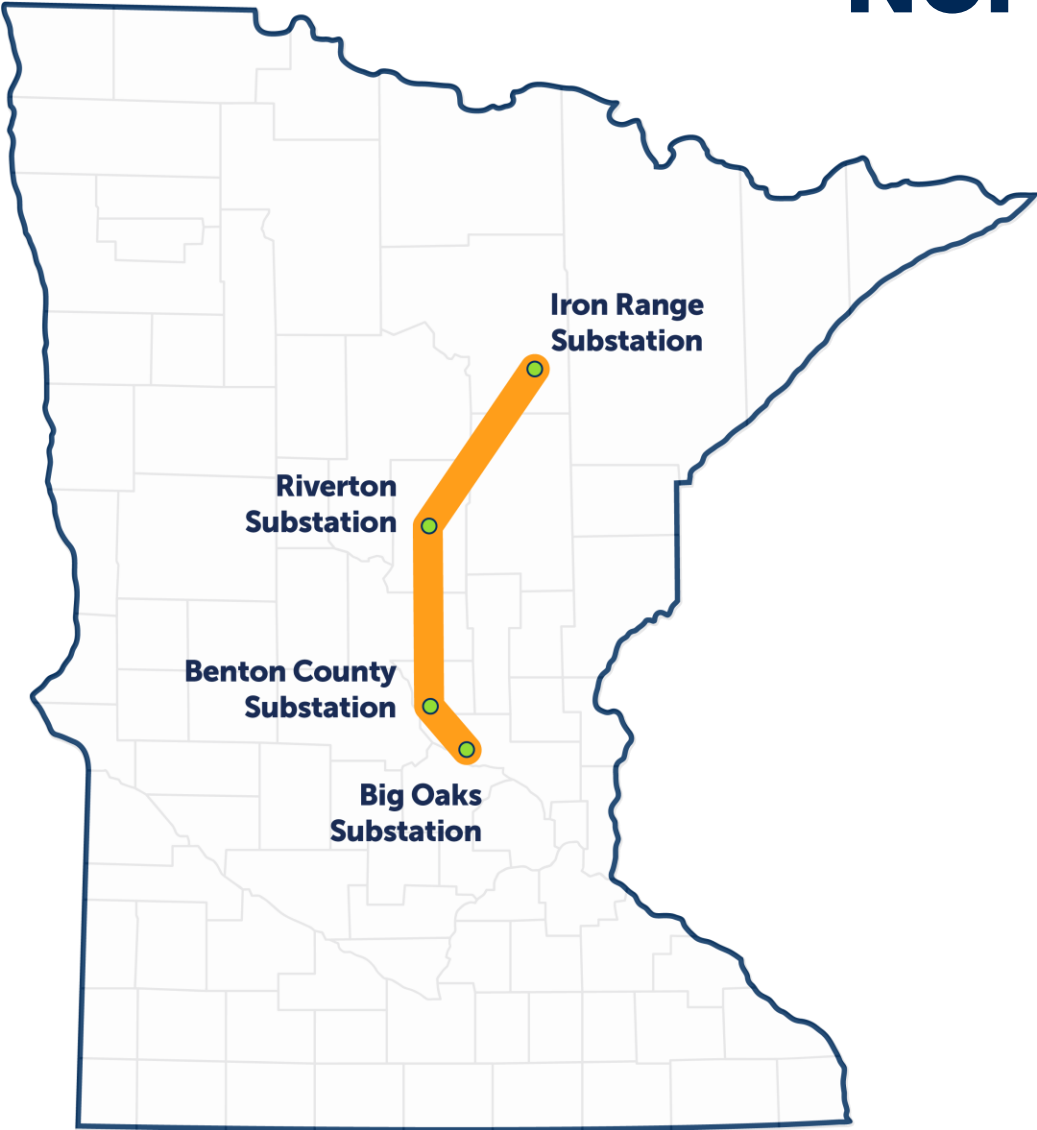
---



## Project Updates

Aitkin County, June 2024

# Northland Reliability Project



**Double-circuit  
345-kV line**

**Over 85% co-located  
with existing HVTL**

**180 miles**

**Expanded and new  
substations**

# MISO-approved project: part of a regional plan



# Fulfilling a need



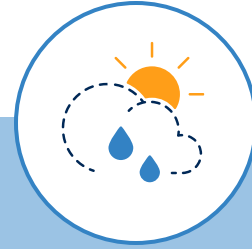
## Maintaining reliability

Provide system support as energy resources continue to evolve.



## Enabling clean energy

Increase capacity to safely and reliably deliver clean energy from where it's produced to where it's needed by our customers and members.



## Strengthening resiliency

Enhance system resiliency during extreme weather events.



## Enhancing flexibility

Plan proactively to meet changing customers' and members' power needs due to decarbonization and electrification.

# Two main project segments

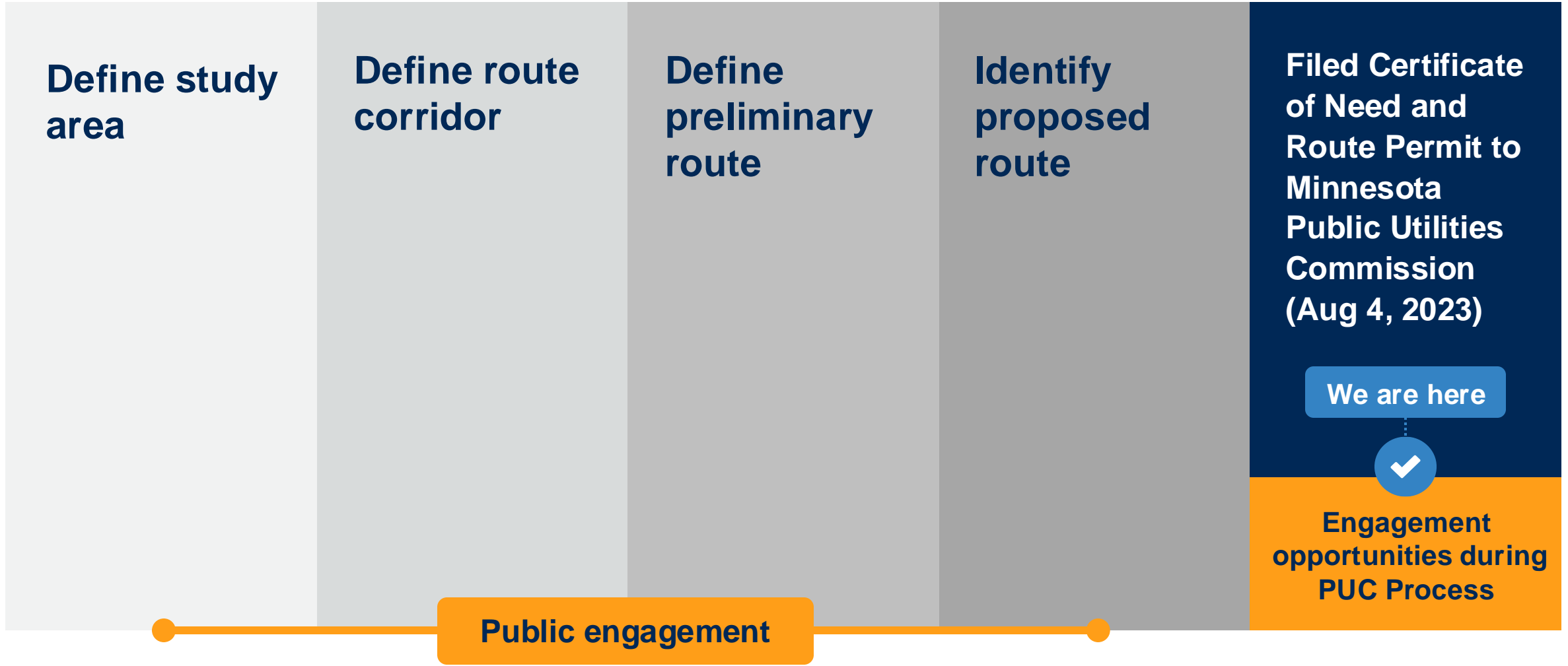
- **Segment one:** Iron Range Substation to Cuyuna Series Comp Station to Benton County Substation
- **Segment two:** Benton County Substation to Big Oaks Substation

## Legend

- ▲ Expand existing substations
- New substation
- Segment one
- Segment two

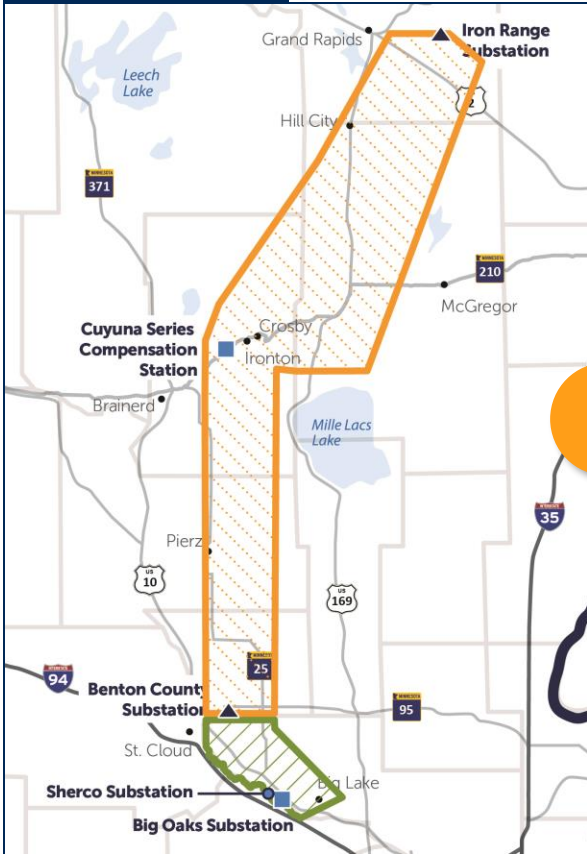


# Our routing process & input opportunities

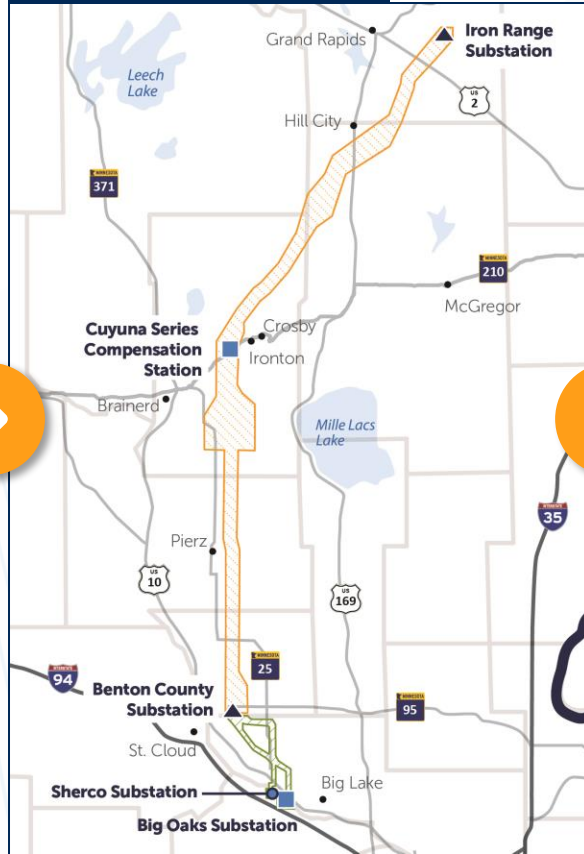


# Route Development

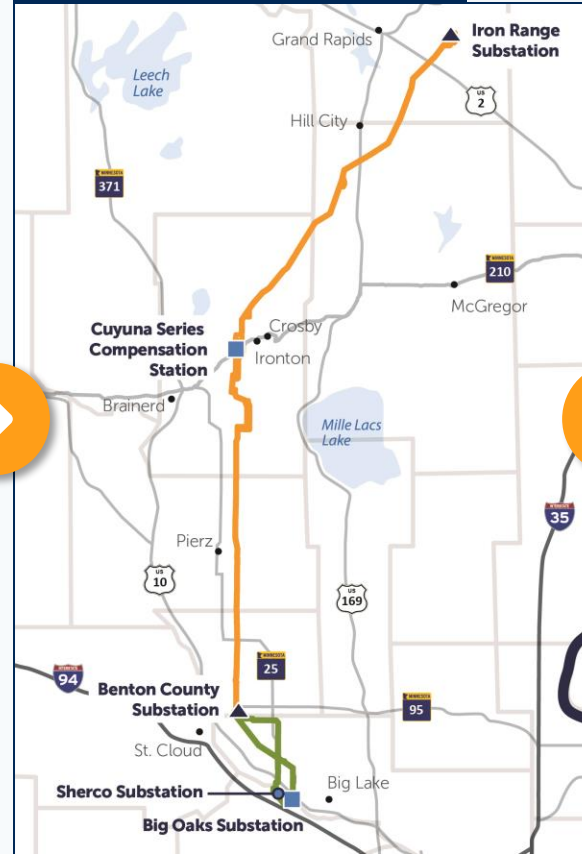
## Study area



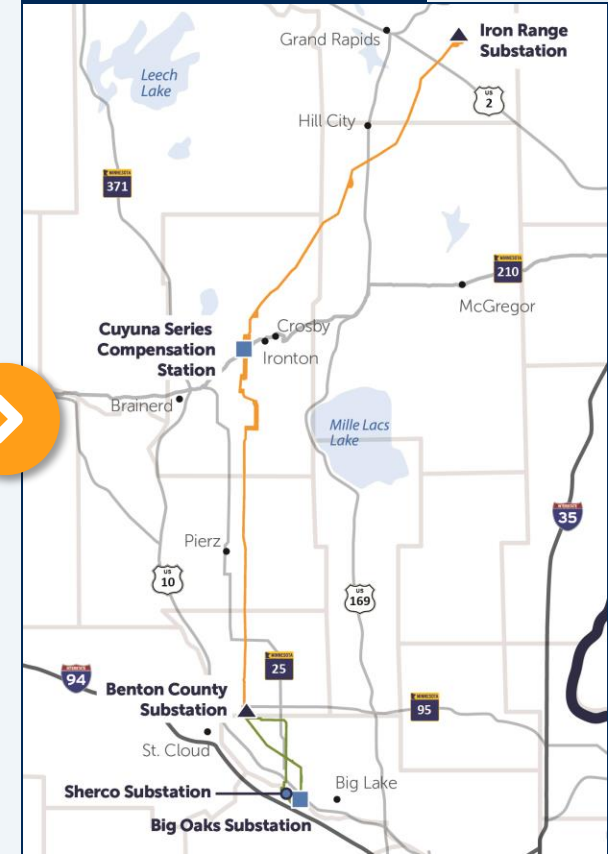
## Route corridor



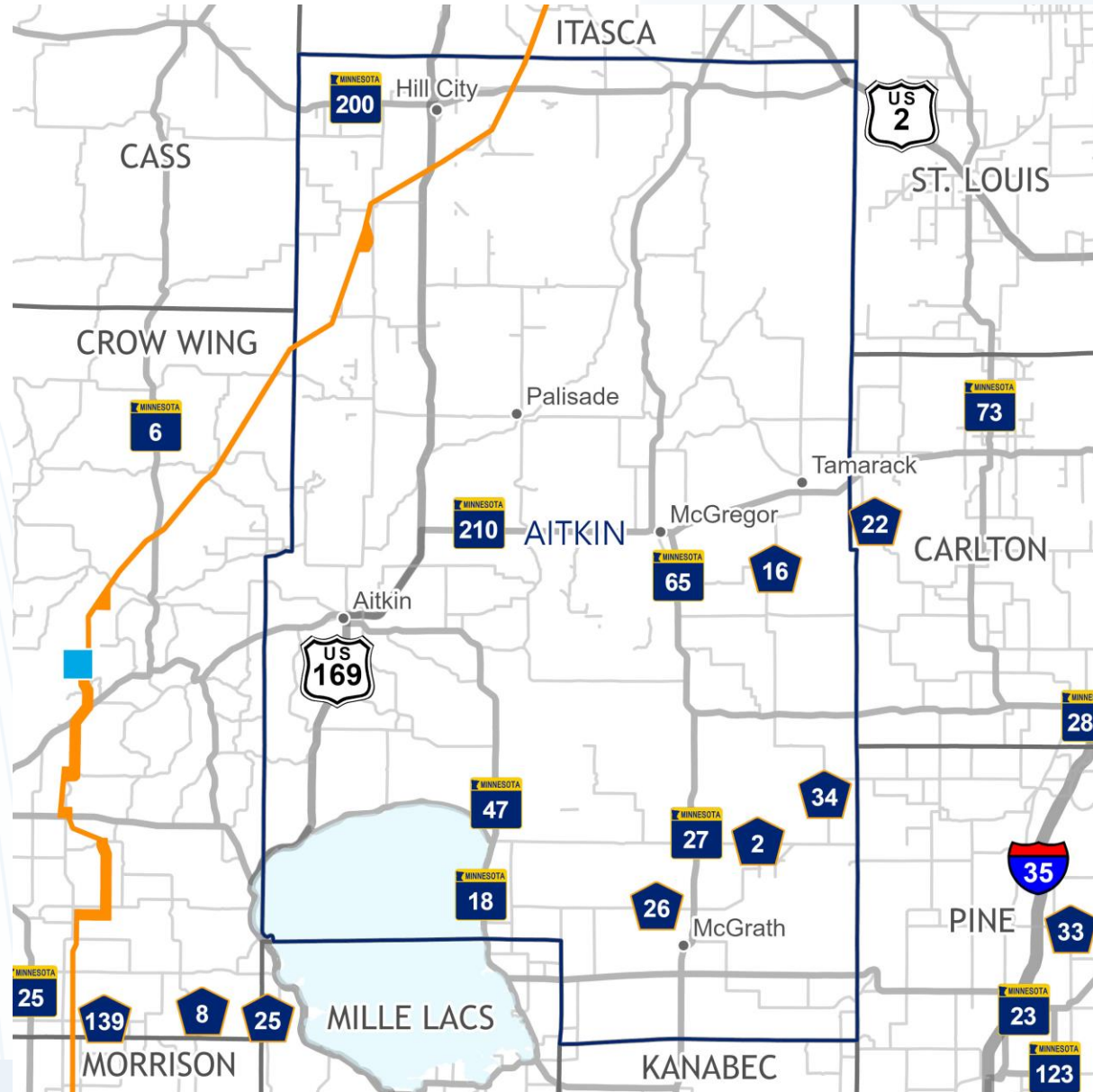
## Preliminary route



## Proposed route



# Proposed Route – Aitkin County





# Route Alternatives – Aitkin County



# State Regulatory Process

- August 2023 - Submitted a joint Certificate of Need and Route Permit Application to the Public Utilities Commission (PUC)
- October 2023 – PUC/Department of Commerce (DOC) public scoping meetings
  - Collected public feedback on the proposed routes and consider route alternatives
  - Identified route alternatives being evaluated in the Environmental Assessment (EA)



## Visit

[edockets.state.mn.us](https://edockets.state.mn.us)

- Certificate of Need: docket **22-416**
- Route Permit: docket **22-415**

# State Regulatory Process



- June 2024 – DOC publish EA
- July 2024 - Administrative Law Judge (ALJ) hold public hearings across the project area
- Fall 2024 - ALJ report with recommendations to the PUC
- Late 2024 - PUC decision on route permit

**Visit**

[edockets.state.mn.us](https://edockets.state.mn.us)

- Certificate of Need: docket **22-416**
- Route Permit: docket **22-415**

# Field Surveys

**Started**  
October 2023



**Continuing**  
May – November 2024



**Continuing**  
Into 2025

*\*Landowner notices provided in advance of surveys*

## Types of surveys



Biological



Wetlands



Land



Cultural  
resources



Noxious weeds



Soil borings

**Acoustic detectors  
for bats**



# Real Estate Process



**Right-of-entry**  
2023 – 2024



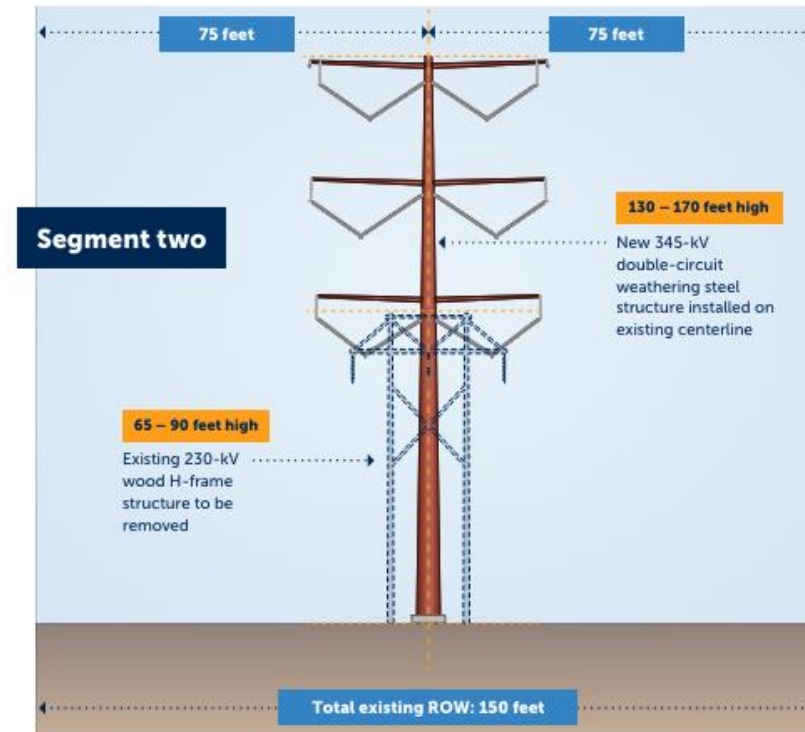
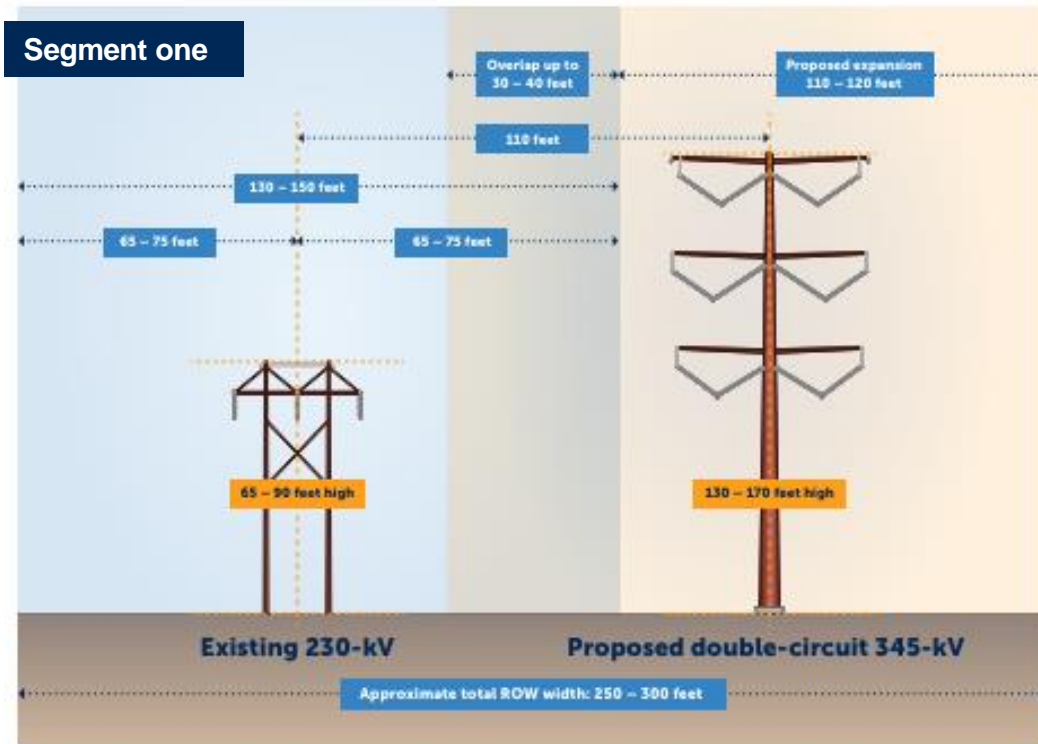
**Easements**  
2024 – 2026



**Construction**  
2025 – 2030



**Restoration**  
2027 – 2031



# Upcoming Project Milestones



PUC/DOC EA and public hearing



Engineering design for substations and transmission line



State and federal permitting efforts



Environmental field surveys in Segment 1 in Spring and Fall 2024



Anticipate construction starting on Segment 2 in Fall 2025

# Northland Reliability Project

---



## Connect with us!



[northlandreliabilityproject.com](http://northlandreliabilityproject.com)



Send us an email at  
[connect@northlandreliabilityproject.com](mailto:connect@northlandreliabilityproject.com)



Call our hotline at  
218-864-6059