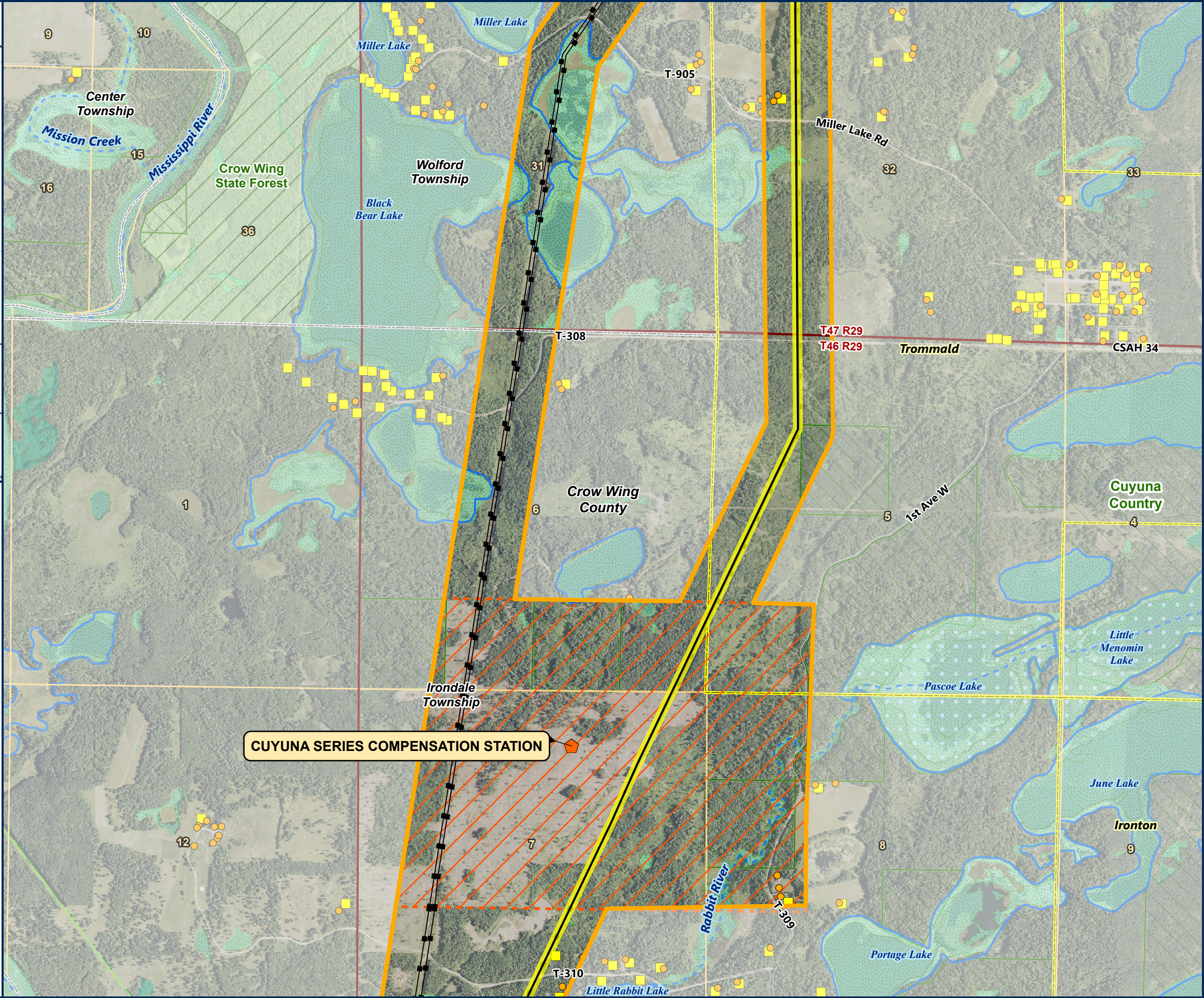
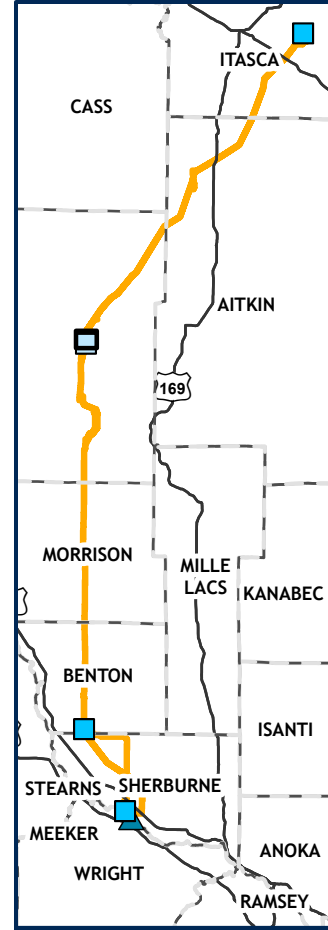


Path: \\mspe-gis-file\GISPro\MinPower\10348886\_NRP\7.2\_WIP\map\_docs\_AGENCY\NRP\_Final\_Route.aprx\NRP\_January2025\_Route\_11X17L\_

# Northland Reliability Project



## Detailed Map Northland Reliability Project (NRP) Route Page 24 of 64

- NRP ROUTE
  - NRP ANTICIPATED ALIGNMENT
  - NRP ANTICIPATED RIGHT OF WAY
  - REPLACE GRE-BS LINE
  - REPLACE MR LINE
  - REBUILD EXISTING 69KV
  - SHIFT MR MODIFIED, 230KV
  - DOUBLE-CIRCUIT 230/115KV (92 LINE/11 LINE)
  - SHIFT DOUBLE-CIRCUIT 230/69KV (MR LINE/BP LINE)
  - SHIFT 92 LINE, 230KV
  - REBUILD EXISTING TRANSMISSION LINES
- EXISTING TRANSMISSION LINE
- 69 KV
  - 115 KV
  - 230 KV
- SUBSTATION SITING AREA
  - BIG OAKS SUBSTATION AREA
  - CUYUNA SERIES COMPENSATION STATION
  - RESIDENCE
  - NOT A RESIDENCE
  - PWI WATERCOURSE
  - PWI WATERBODY
  - NON-FORESTED WETLAND
  - FORESTED WETLAND
  - WILDLIFE MANAGEMENT AREA
  - STATE CONSERVATION EASEMENT
  - FEDERAL CONSERVATION EASEMENT
  - AQUATIC MANAGEMENT AREA
  - STATE FOREST
  - STATE PARK
  - OTHER DNR LAND
  - COUNTY BOUNDARY
  - MUNICIPAL BOUNDARY

